



View our website



Currently Dismantling: Caterpillar 992G Loader

Contact us today at 218-471-2200 or miningsolutions@rmseq.com for parts availability.



Rebuilt Komatsu HD785-7
Hoist cylinders (Qty. 2)



Rebuilt Komatsu HD785-7
Final drives (Qty. 2)



Rebuilt Caterpillar D9T
Finals (Qty. 2)



Used Caterpillar 992G
Spade nose bucket with teeth



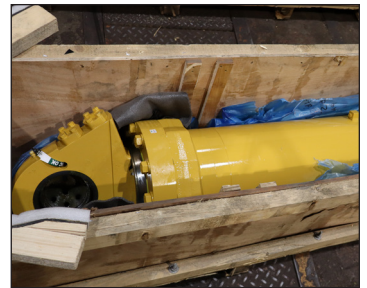
Rebuilt Komatsu 830E-1AC
Front corners (Qty. 4)



Rebuilt Caterpillar D11T
Final and 2 steering clutches



Rebuilt Caterpillar 992K
Boom assy



New Caterpillar 777G
Hoist cylinders (Qty. 2)

RMS

MINING SOLUTIONS